

TECHNICAL
DATASHEET

FRANNA[®]
A TEREX BRAND

MAC 25-4 PICK AND CARRY CRANE



MAXIMUM CAPACITY
25t



MAXIMUM BOOM LENGTH
18.4m



MAXIMUM HOOK HEIGHT
18m

terex.com/franna



OVERVIEW

The MAC 25-4 is a mobile articulated crane with a maximum lifting capacity of 25 tonne (27 USt). The MAC 25-4 offers maximum safety, excellent roadability, intuitive operation and unmatched versatility. Over the years its design has been tried, tested and proven in a range of difficult lifting applications and is still a customer favourite today.

A superlift (SL) upgrade is also available on the MAC 25-4 as an additional option. The SL kit works in tandem with the existing MAC 25 counterweight, adding a low slung additional counterweight piece to the rear of the machine, increasing the rated capacity of the machine.



⚙️ KEY FEATURES AND BENEFITS:

- ▶ 25 tonne at 1.4m radius
- ▶ 14.8 tonne at 3.0m radius
- ▶ 1.8 tonne at 15.7m radius
- ▶ 18m hook height
- ▶ Single line pull 4.2 tonne
- ▶ Increased rated capacity of up to 30% with SL option
- ▶ Dynamic LMI (Patent Protected)
- ▶ Unique boom head design allows for maximum clearance
- ▶ Easy access to all key maintenance points



TECHNICAL DESCRIPTION

01. Boom

Maximum boom length	18.4m
Maximum hook height	18m
Boom elevation angle range	-10° / 65°
Maximum hook height with jib	20.5m
Articulation	40° R / 40° L
Machinery hook	15 tonne

02. Winch

Maximum line pull	4.2 tonne
Two speed winch	38m/min / 76m/min
Hook block (6 part)	25 tonne maximum rated capacity

03. Engine & Transmission

Standard engine	Mercedes OM 906
Engine power	205kW
Engine torque	1100 Nm
Fuel Type	Diesel
Fuel Capacity	440 litre
Transmission	Allison 6 speed
Transfer case	ZF 2:1 Ratio

04. Hydraulic System

Axial piston pump	62cc/rev
Maximum pump flow rate	130 litre/min
Maximum working pressure	250 bar
Hydraulic tank capacity	380 litre

05. Chassis

Front Axle	11,900 kg
Rear Axle	12,000kg
Axle total	23,900 kg
Turning circle	7.9m

06. Brakes & Suspension

Brake System	Air operated drum brakes
Suspension	Elliptic springs with hydraulic spring lockouts on front axle

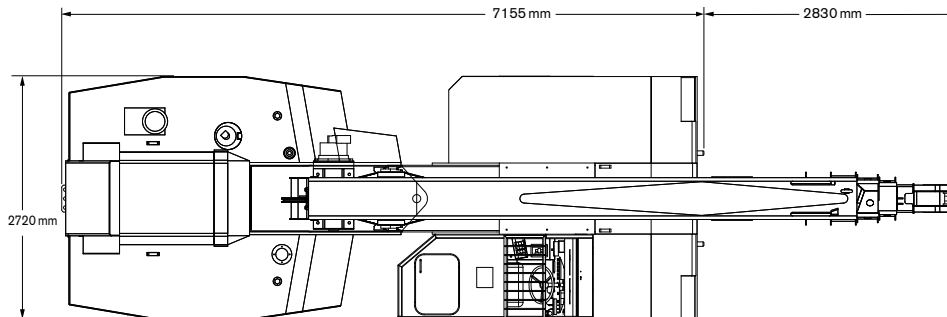
07. Vehicle Performance

Maximum rated travel speed	80 km/h
Gradeability	45%

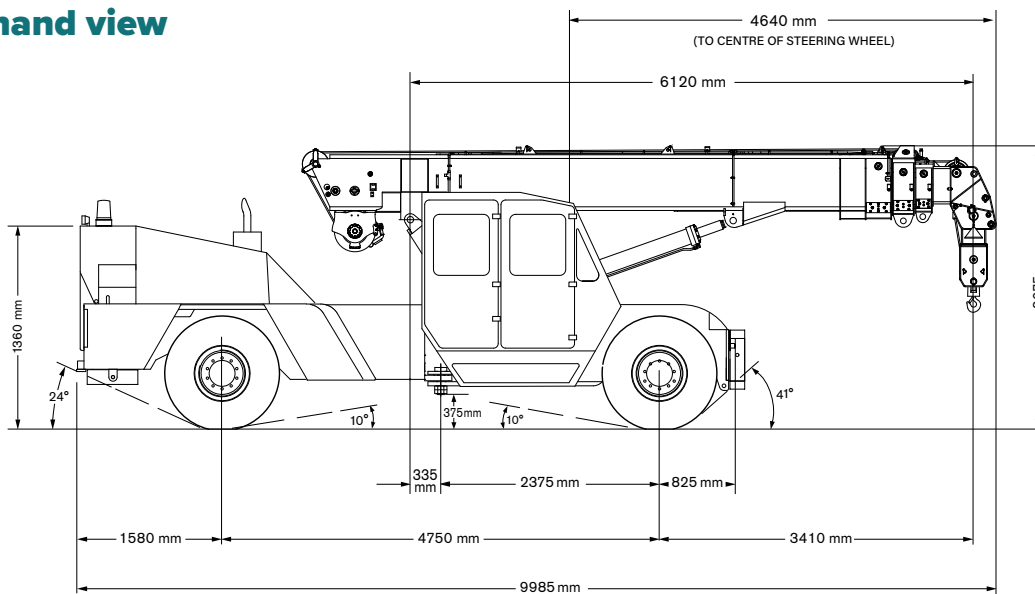


DIMENSIONS / AREA OF OPERATION

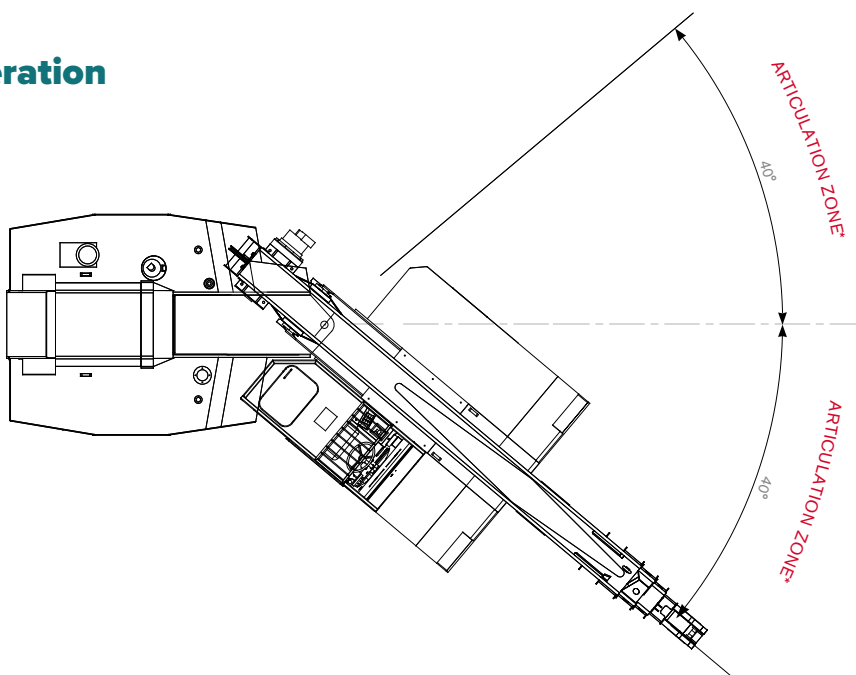
Plan view



Right hand view



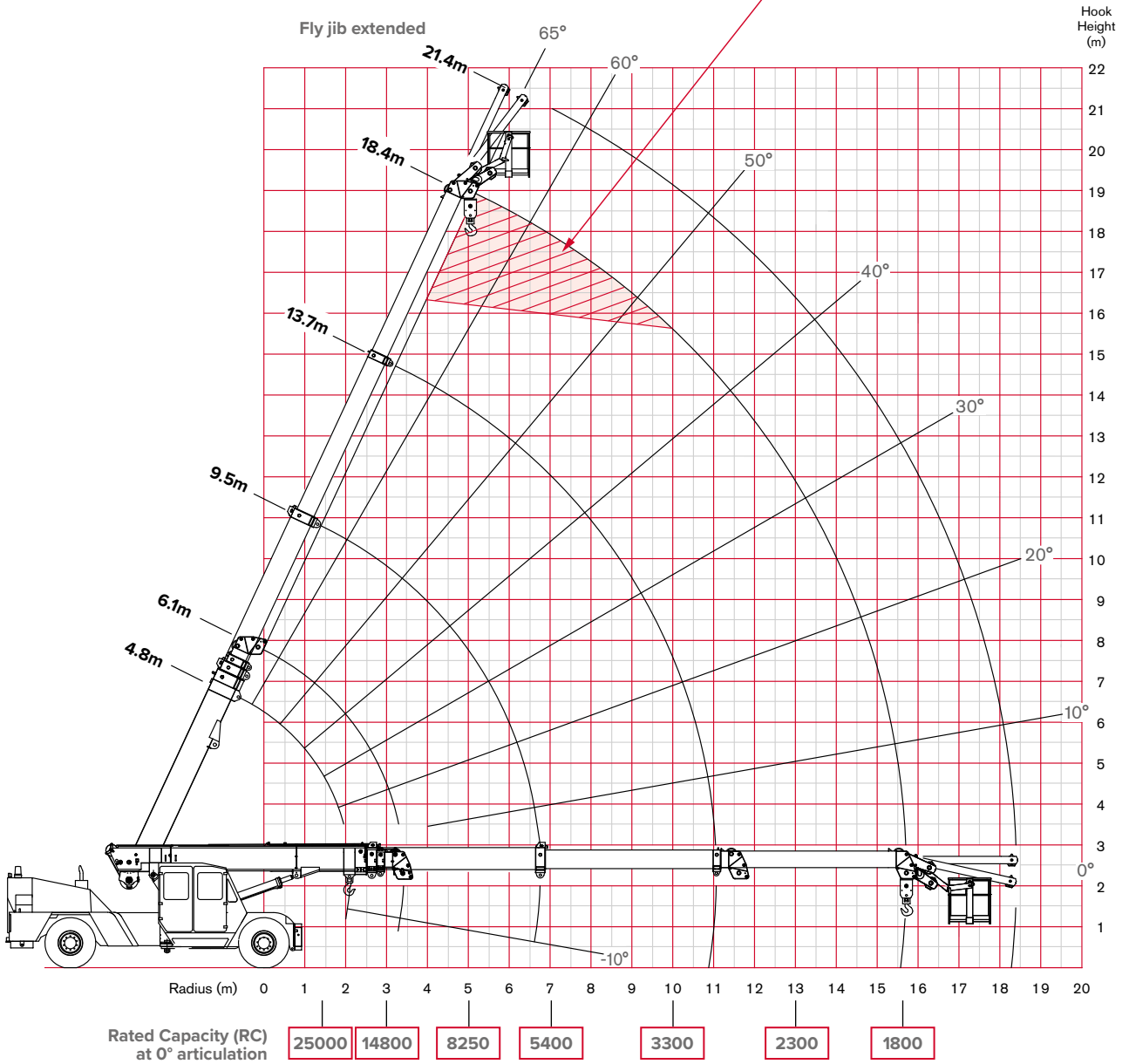
Area of operation



RADIUS LOAD CHART



Hook will not reach ground when boom head is in the region if the hook block is reeved on 6 parts



NOTE: Rated Capacity values shown are for the Pick and Carry Chart.



MAC 25-4 WORKING



OUR LOCATIONS



Brisbane (Head Office)

Terex Australia Pty Ltd
585 Curtin Avenue East (PO Box 1396)
Eagle Farm QLD 4009, Australia

Tel: +61 7 3868 9600

Fax: +61 7 3268 2489

Services: Manufacturing, Sales, Service, Parts

Sydney

Terex Australia Pty Ltd
114 Hassall Street
Wetherill Park NSW 2164, Australia

Tel: +61 2 8786 4444

Fax: +61 2 8786 4455

Services: Sales, Service, Parts

Melbourne

Terex Australia Pty Ltd
133 Logis Boulevard
Dandenong South VIC 3175, Australia

Tel: +61 3 8794 4170

Fax: +61 3 9551 8143

Services: Sales, Service, Parts

Perth

Terex Australia Pty Ltd
39 Catalano Road
Canning Vale WA 6155, Australia

Tel: +61 8 9232 0000

Fax: +61 8 9232 0051

Services: Sales, Service, Parts

Tel: 1800 837 395

Email: franna@terex.com